

Answers: 12.3.1.5 Lab - Configure the Firewall in Windows 8

Introduction

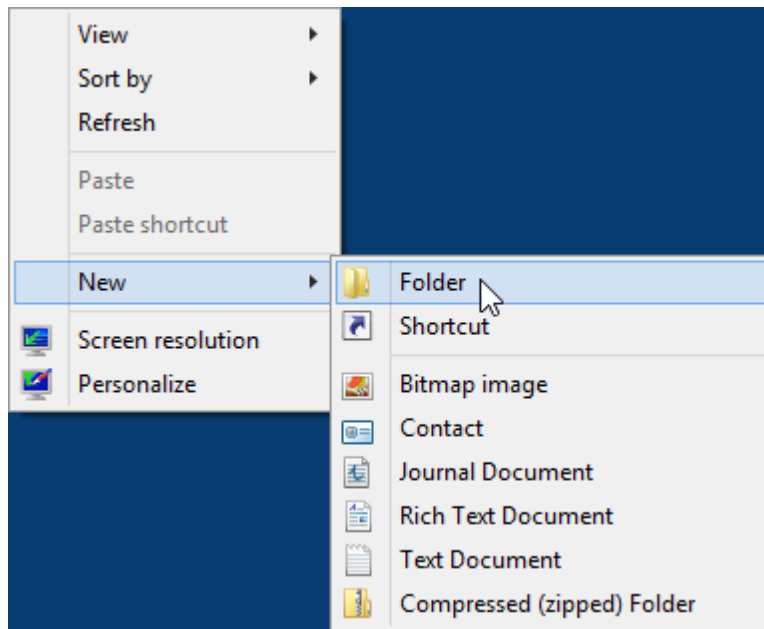
In this lab, you will explore the Windows Firewall and configure some advanced settings.

Recommended Equipment

- Two computers directly connected or connected over the network
- Windows 8 installed on both computers
- Computers must be in the same workgroup and share the same subnet mask

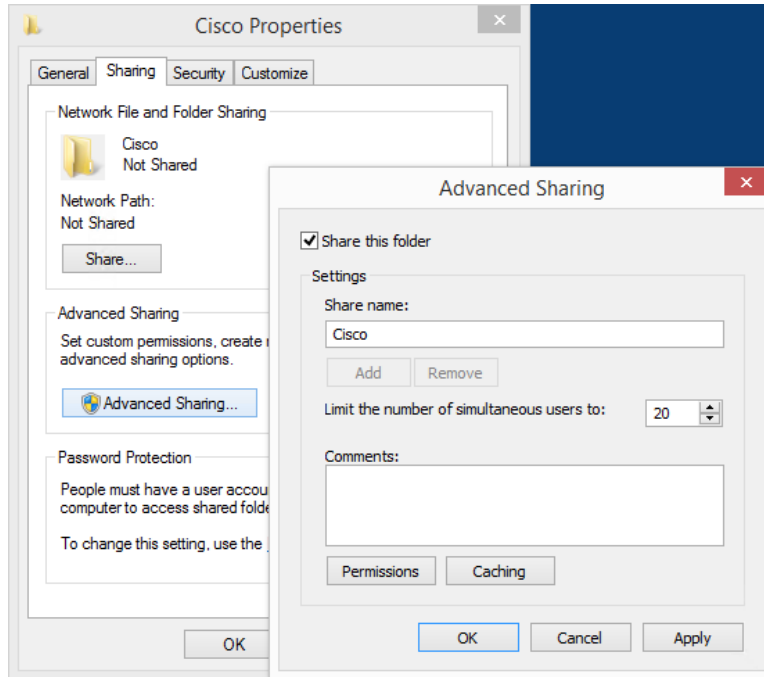
Step 1: Create and share a folder on PC-1.

- Log on to **PC-1** as a member of the administrator group. Ask your instructor for the user name and password.
- On **PC-1**, right-click the desktop, select **New > Folder**. Name the folder **Cisco**.



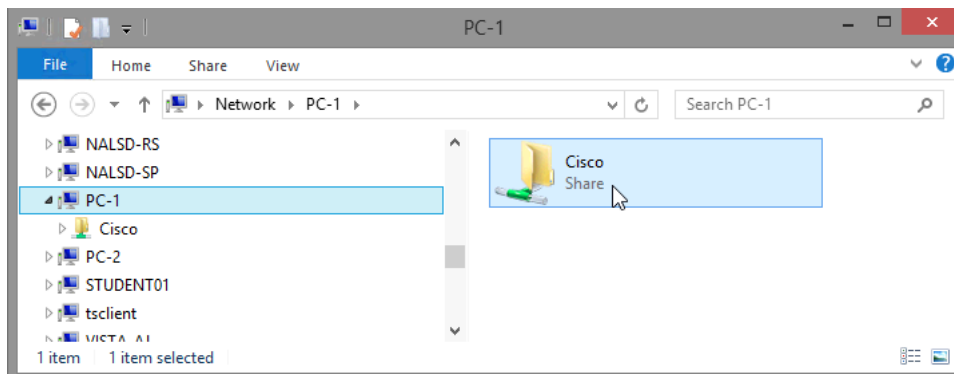
Lab - Configure the Firewall in Windows 8

- c. Right-click the Cisco folder, and then select **Properties > Sharing > Advanced Sharing**. The **Advanced Sharing** window opens. Click **Share this folder** and use the default name **Cisco**. Click **OK**. Close the **Cisco Properties** window.



Step 2: Use File Explorer to view PC-1's shared folder.

- a. Log on to **PC-2** as a member of the administrator group. Ask your instructor for the user name and password.
- b. Open **File Explorer** window. In the left pane, under **Network**, expand **PC-1**.



Under PC-1, Are you able to see the shared folder **Cisco**?

Note: If you answered no, ask the instructor for help.

- c. Close **File Explorer**.

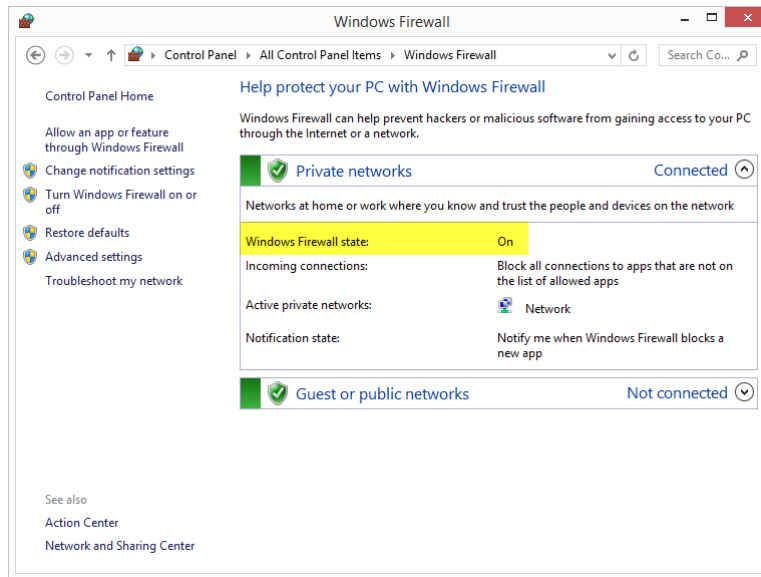
Step 3: Open Windows Firewall on PC-1.

Note: Use **PC-1** for the rest of the lab unless otherwise stated.

- a. To open the **Windows Firewall** window, click **Control Panel > Windows Firewall**.

Lab - Configure the Firewall in Windows 8

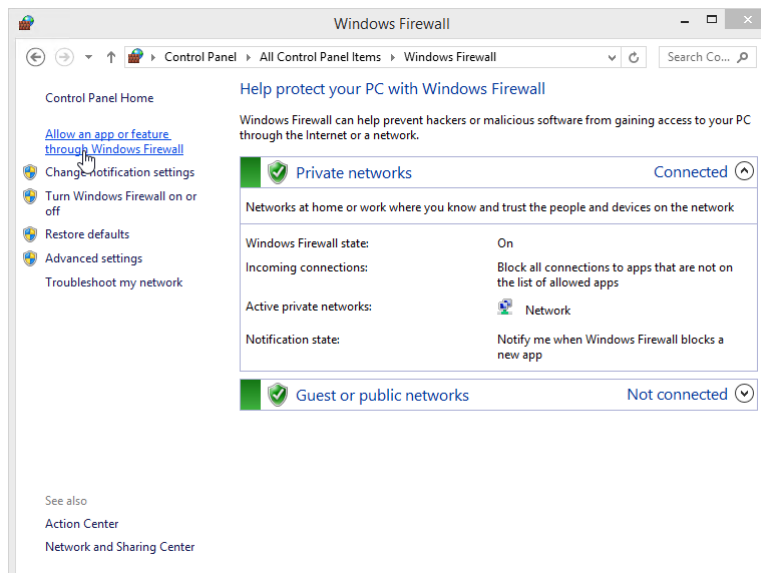
- b. The normal state for the Windows Firewall is **On**.



- c. What are the benefits of Windows Firewall?

Step 4: Investigate the Windows Firewall Allowed Programs feature.

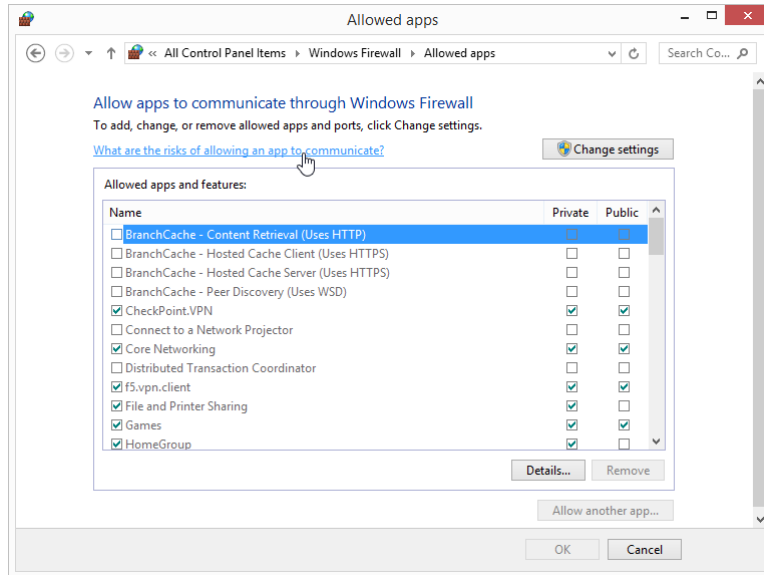
- a. Click **Allow an app or feature through Windows Firewall**.



Lab - Configure the Firewall in Windows 8

- b. The **Allowed apps** window opens. Programs and services that Windows Firewall is not blocking will be listed with a check mark. Click **What are the risks of allowing an app to communicate?**

Note: You can add applications to this list. This may be necessary if you have an application that requires outside communications but for some reason the Windows Firewall cannot perform the configuration automatically.

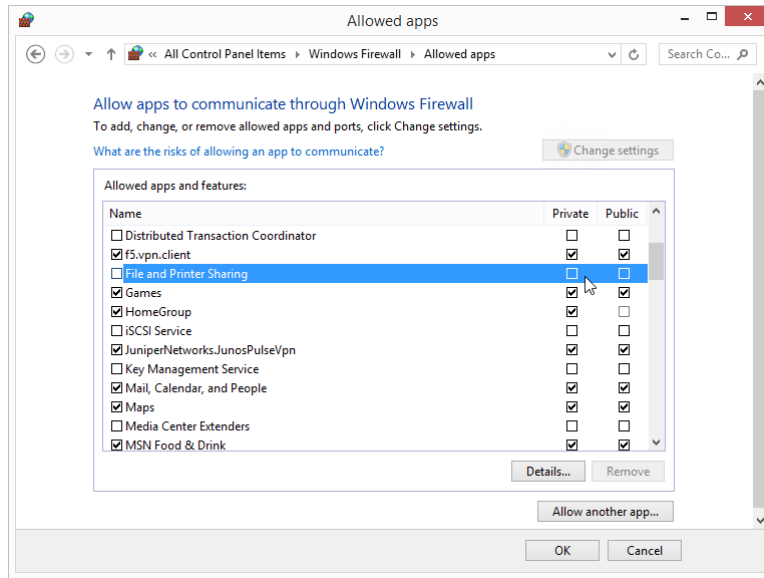


Creating too many exceptions in your Programs and Services file can have negative consequences. Describe a negative consequence of having too many exceptions.

- c. Close **Windows Help and Support** window.

Step 5: Configure the Windows Firewall Allowed apps feature.

- a. Click the **Allowed apps** window so it is active. Click **Change settings**. Remove the check mark from **File and Printer Sharing**. Click **OK**.



- b. On **PC-2**, using **File Explorer**, attempt to open the network connect to **PC-1**.
Can you connect to PC-1 and view the Cisco shared folder?
Did you receive an error message on PC-2? If so, what was the Error message?
- c. Close all open windows on **PC-2**.
- d. On **PC-1**, add a check mark to **File and Printer Sharing**. Click **OK**.
Note: You should be able to add the check mark without needing to click **Change settings**.
- e. On **PC-2**, re-open File Explorer and attempt to connect to **PC-1**.
Can you connect to computer 1? Why?
- f. Close all open windows on **PC-2** and Log off .
- g. Close all windows on **PC-1**.

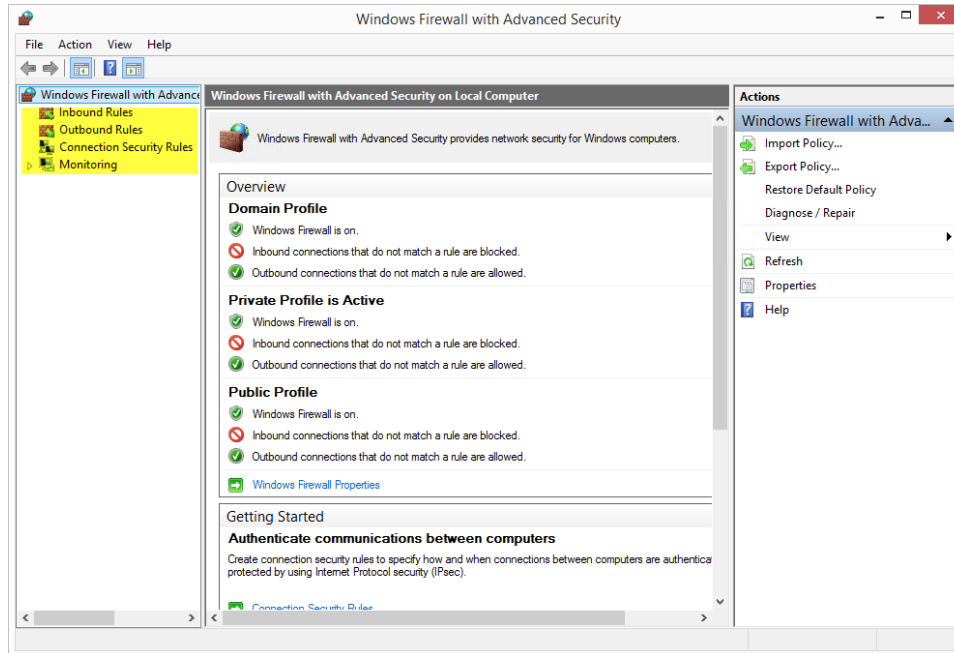
Step 6: Configure Advanced Security features in Windows Firewall.

Note: Use **PC-1** for the rest of this lab.

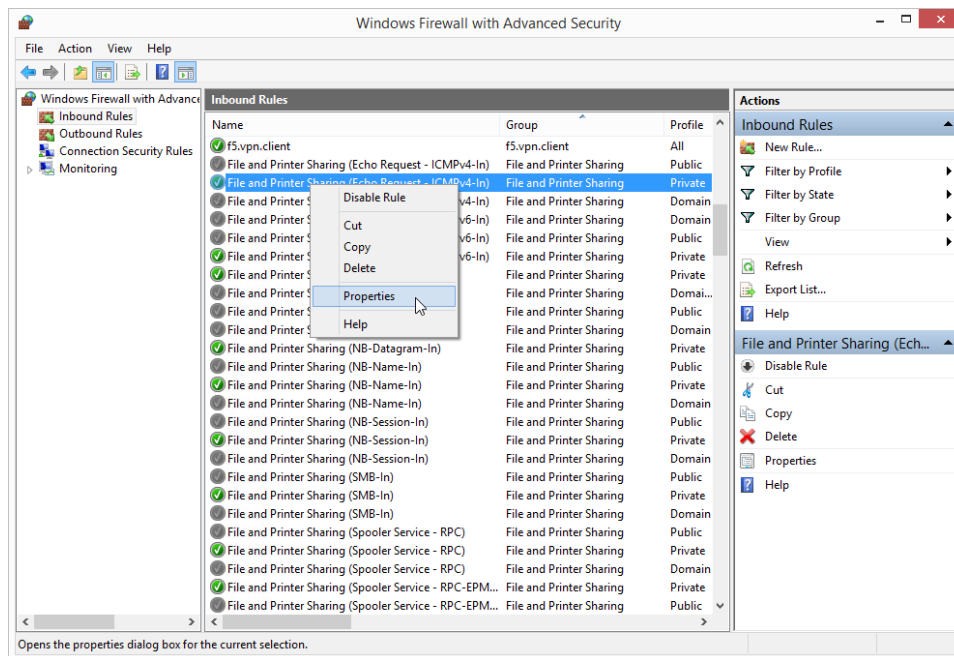
- a. Click **Control Panel > Administrative Tools > Windows Firewall with Advanced Security**

Lab - Configure the Firewall in Windows 8

- b. The **Windows Firewall with Advanced Security** window opens. In the panel on the left, you can select items to configure **Inbound Rules**, **Outbound Rules**, or **Connection Security Rules**. You can also click **Monitoring** to view the status of configured rules. Click **Inbound Rules**.

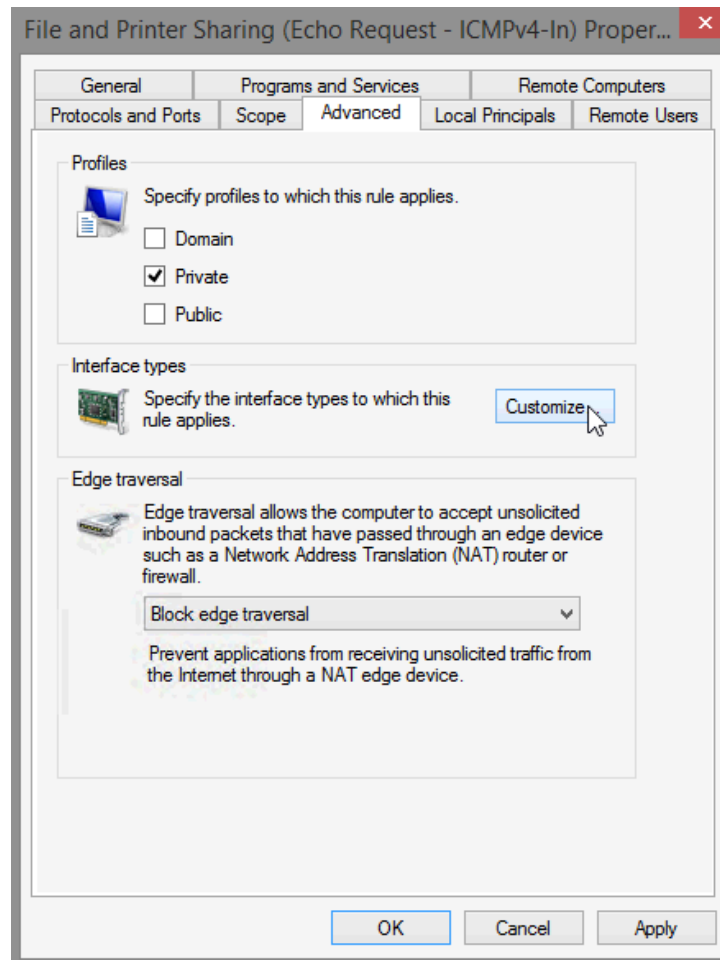


- c. In the middle panel, scroll down until you find the inbound rule named **Files and Printer Sharing (Echo Request – ICMPv4-In)**. Right-click the rule and select **Properties**, then select the **Advanced** tab.



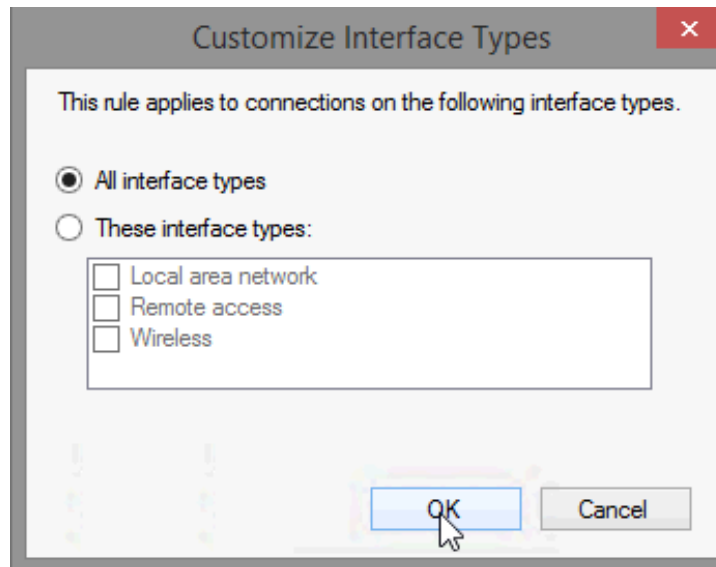
Lab - Configure the Firewall in Windows 8

- d. The **Advanced** tab displays the profile(s) used by the computer. Click **Customize** in the **Interface Types** area of the window.

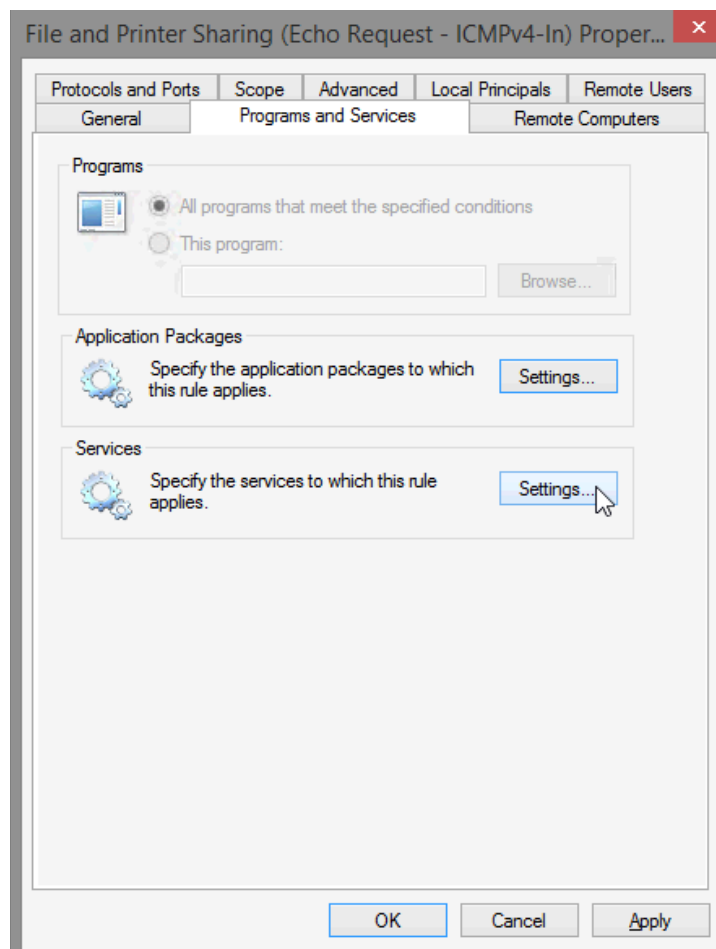


Lab - Configure the Firewall in Windows 8

- e. The **Customize Interface Types** window opens. It displays the different connections configured for your computer. Leave **All interface types** selected, then click **OK**.

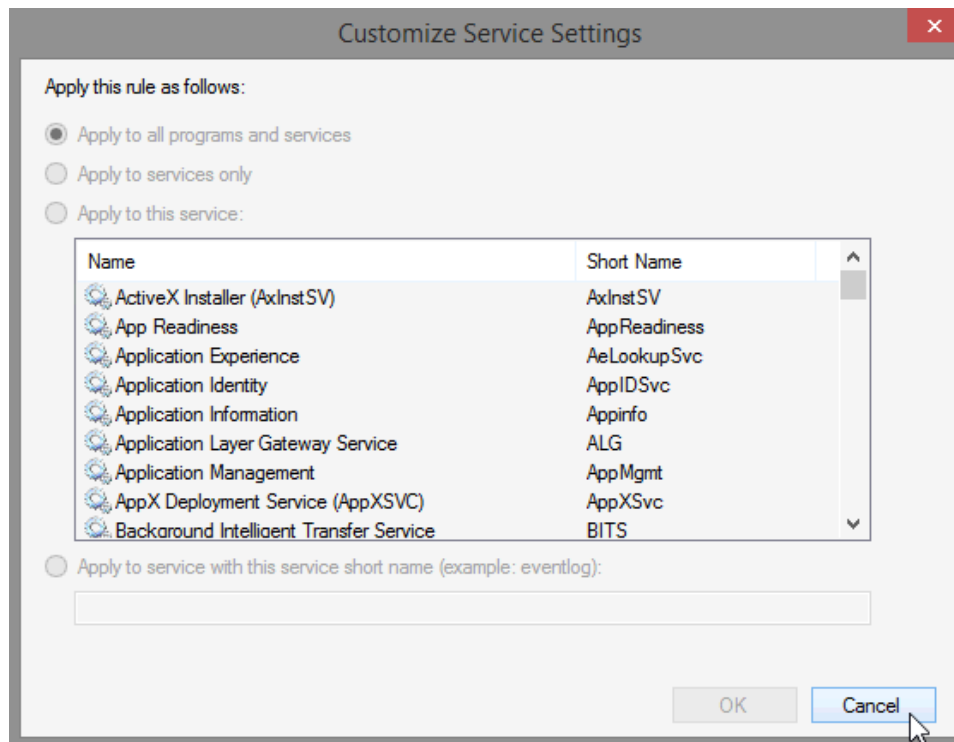


- f. Click the **Programs and Services** tab. In the **Services** section, click **Settings...**



Lab - Configure the Firewall in Windows 8

- g. The **Customize Service Settings** window opens.

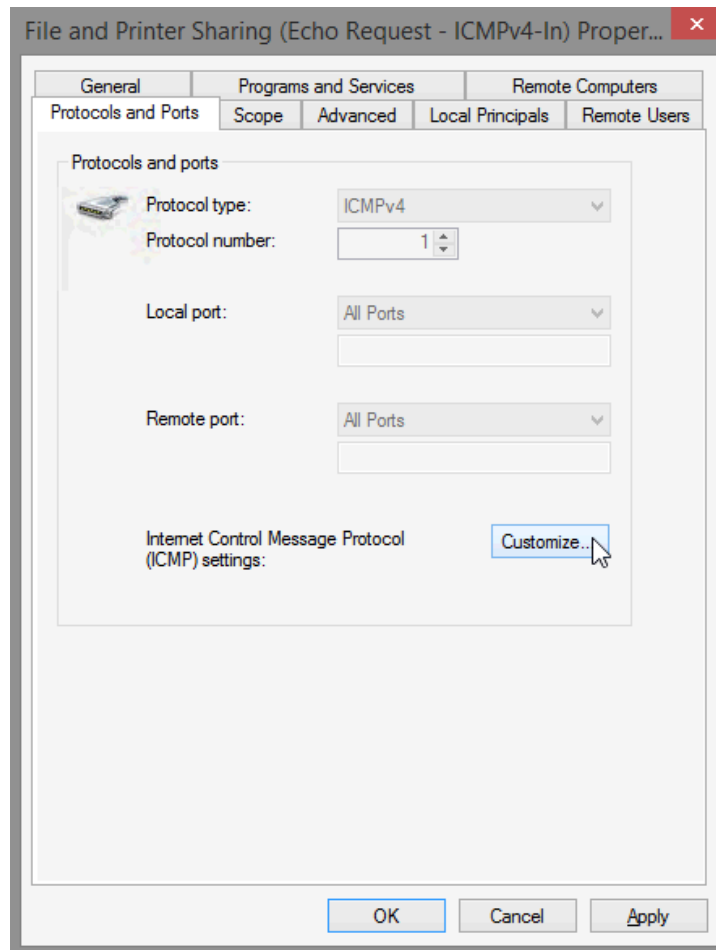


- h. List the short name of four services that are available.
- i. Click **Cancel** to close the **Customize Service Settings** window.

Lab - Configure the Firewall in Windows 8

- j. Click the **Protocols and Ports** tab.

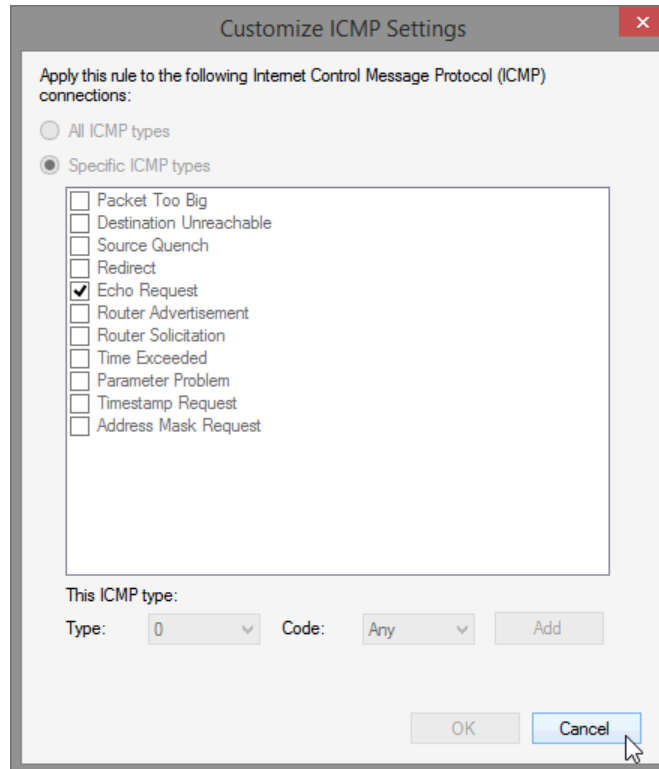
Note: There are many applications that users do not normally see that also need to get through the Windows Firewall to access your computer. These are the network level programs that direct traffic on the network and the Internet.



- k. For the ICMP settings, click the **Customize** button.

Lab - Configure the Firewall in Windows 8

- I. The **Customize ICMP Settings** window opens. Allowing incoming echo requests is what allows network users to ping your computer to determine if it is present on the network.



List four of the Specific ICMP types.

- m. Close all open windows on **PC-1**.
- n. Right-click the **Cisco** folder on the Desktop, then select **Delete**.

Reflection

What are some possible reasons you may need to make firewall changes?